



Ruman[®] **FAT**

Rumen-protected fat, providing energy
for improved milk yield and fertility

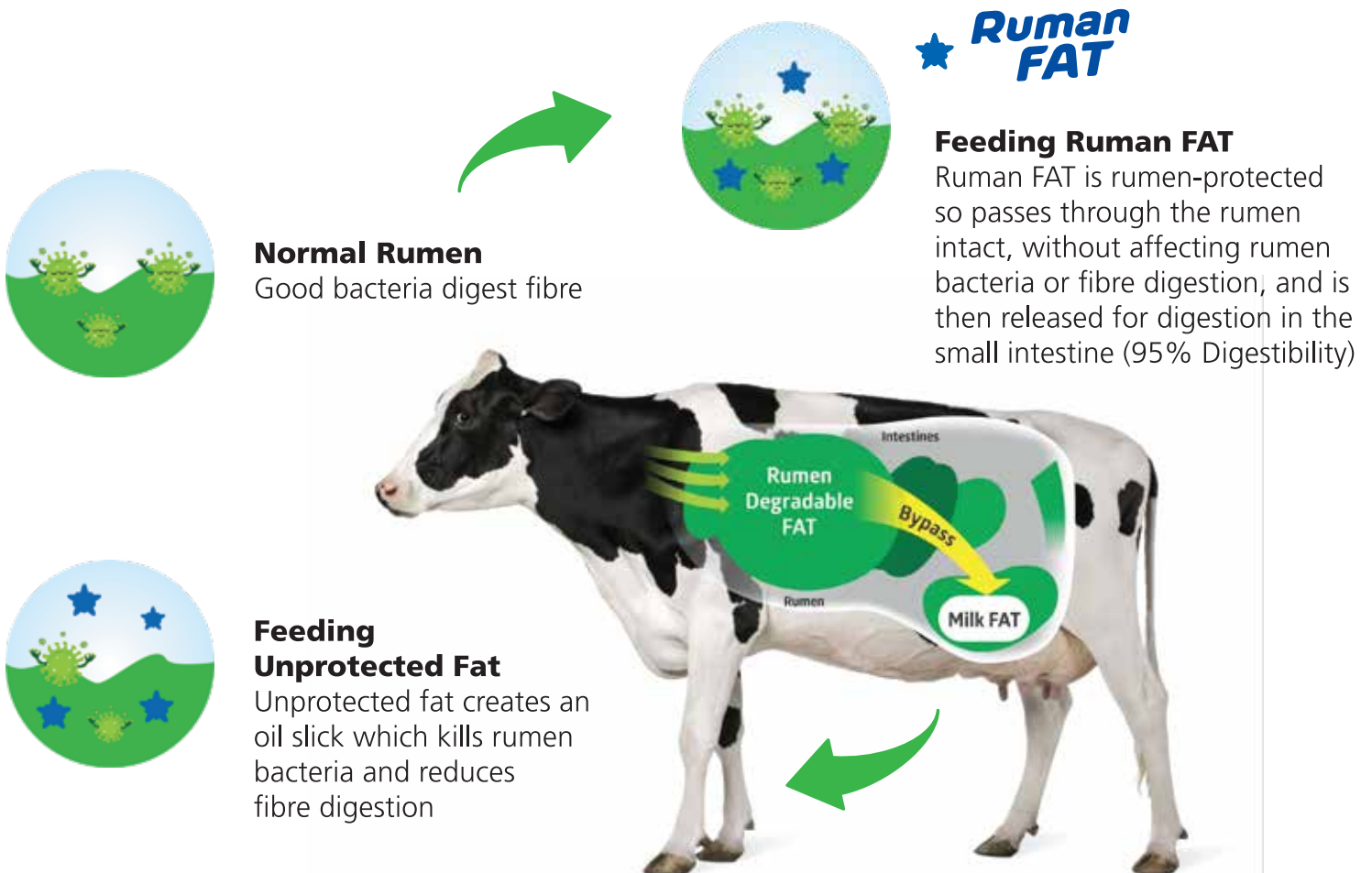
WHAT IS RUMAN FAT

Win Cattlefeed & Care Products Industries manufacturer of Calcium Soap of long fatty acids (Bypass fat 84%), is sourced from current palm oil based feedstock (PFAD) from refineries based in India.

Ruman FAT is a high-energy rumen-protected fat made by reacting fatty acids and calcium to produce a rumen-insoluble fat supplement.

Ruman FAT avoids the disruption to fibre digestion associated with liquid oils and high-oil ingredients in the ration.

Ruman FAT granules pass through the rumen (ideal pH >6) but are broken down in the acidic small intestine (pH 2.5) to release the fat and calcium for digestion.



WHY FEED RUMAN FAT

Usually ration of high yielding cows during early lactation is energy deficient

The animals are fed limited quality of cultivated fodder & energy rich supplements. As a result, animal loose body weight after calving at a faster rate

Under field conditions, crossbred cows loose around 80 – 100 kg body weight after calving

Such debilitated animals don't come in heat, unless they fully or partially recover from the lost body weight. This lead to delayed conception in animals after calving, resulting into longer inter-calving interval

Raw edible oil if given beyond certain proportion as a source of fat for increasing energy density of ration may adversely affect fiber digestion. Therefore it is necessary to supplement the fat in such form, which can provide energy without affecting fiber digestion in rumen

CHARACTERISTICS

Bypass Fat comprises fatty acids associated with calcium ions, instead of a glycerol backbone

When Calcium is associated with fatty acids, the fat supplement thus formed is rumen inert

Bypass fat has low solubility in the rumen & is less susceptible to bio hydrogenation

However, in abomasum at acidic pH it dissociates and set free fatty acids & Calcium for absorption

So feeding Bypass Fat to early lactating animals increases Milk & fat Yield

BENEFITS

Improves Body conditioning

Energy Supplement for early lactating & pregnant animals to overcome negative energy balance

Essential fat source which enhances milk production & persistency of lactation

Decreases metabolic disorders such as Ketosis, Acidosis & Milk Fever

Increases productivity, conception rates & life of animals

Can be fed as a part of your Total Mixed Ration (TMR), top dressed or as part of manufactured Blend due to its high melting point can be perfect for feed mills

**FREE FLOWING
POWDER & GRANULES**



HOW MUCH RUMAN FAT TO FEED

Milk yield increases tremendously right after calving, while dry matter intake increases at a slower rate. This causes an 'energy gap' during the early lactation phase. This is when the body reserves of dairy cow is used for milk production.

Ruman Fat can be used most effective during early lactation phase.

Example fat requirements		Species Typical feed rate (g/head/day)*	
Milk yield	40 kg/day	Lactating Cows	400-800
Milk fat	4.0 %	Dry Cows	150
Milk fat yield	1.6 kg/day	Beef Cattle	150-500
Diet fat requirement	1.6 kg/day	Sheep & Goats	50-100

DESCRIPTION

TYPICAL ANALYSIS

A dry free-flowing granular product with a greater proportion of larger particles

Fat	Ash	Calcium	Moisture	Digestibility	DE*	NEL**
84%	12.5%	9%	5%	0.9	7053	5784

FATTY ACID PROFILE (% of total fatty acids)

C16.0	C18.0	C18.1	C18.2
48	5	36	9
Saturated		Unsaturated	

Available in 25 kg bags

Manufactured & marketed by



Plot 4501, Pahse 4, Vatva GIDC
Ahmedabad, Gujarat - 382445

Email : win.cattle.care@gmail.com
Web : wincattlecare.com
Contact : +91 79 2584 0212

* Digestible Energy
** Net Energy for Lactation